

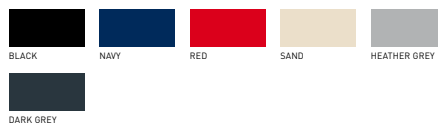
B&C HEAVYMILL LSL > PU 423


B&C
COLLECTION




REGULAR FIT


- Polo à manches longues en B&C Fine Piqué
- Col en côte 1x1
- Bande de propreté dans l'encolure
- Patte de boutonnage 3 boutons renforcée par bande thermofixée
- Boutons ton sur ton
- Poignets en côte 1x1 et élasthanne
- Coutures latérales
- Fentes côtés




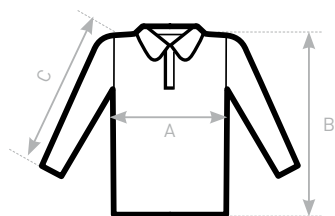
 100% coton **peigné** pré-rétréci à fil de chaîne continu (ring-spun)
HEATHER GREY: 90% COTON PEIGNÉ PRÉ-RÉTRÉCI À FIL DE CHAÎNE CONTINU (RING-SPUN) - 10% VISCOSE

 Piqué

 230 g/m²

 S - M - L - XL - XXL

 10 pces/polybag & 40 pces/carton



SIZES [CM]

B&C HEAVYMILL LSL PU 423	XS	S	M	L	XL	XXL	XXXL
A HALF CHEST	-	50	53,5	57	60,5	64	-
B BODY LENGTH FROM NECK POINT	-	70,5	73	75,5	78	80,5	-
C SLEEVE LENGTH	-	64	65	66	67	68	-

FAIR WEAR FOUNDATION

CONFIDENCE IN TEXTILES
Tested for harmful substances according to Oeko-Tex® Standard 100
150 003 Centexbel