

# B&C ID.601 /WOMEN > JW 161

## LIGHT WEIGHT JACKET / WITH LINING

**BASIC**  
BY B&C

Forward seams  
on shoulders  
for better  
protection

Hood concealed inside  
the collar with  
velcro closing tabs

Self fabric lining  
inside collar

Full zip opening  
with zip pull

Ergonomic  
side panels

2 front  
pockets  
with overlap

Open back for easy access  
for decoration

Adjustable  
bottom hem  
(with drawcord adjusters)

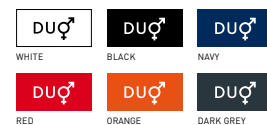
Elasticated  
cuffs

Feminine cut

Ergonomic hood

### Modern lined windbreaker with tricot thermo lining

- 100% 210T polyester taffeta with acrylic coating (AC)
- Body lining: 100% polyester tricot  
Sleeves lining: 100% polyester taffeta
- XS - S - M - L - XL - XXL
- 5 pcs/pack & 30 pcs/carton

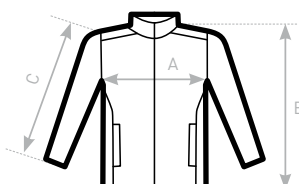


- Windproof
- Thermo-insulated
- Showerproof
- Feminine cut
- Water-repellent



**DUO**  
**CONCEPT**

with B&C ID.601



#### SIZES [CM]

B&C ID. 601 /WOMEN JW 161	XS	S	M	L	XL	XXL
A HALF CHEST	46	49	52	55	58	61
B BODY LENGTH AT CB	63	65	67	69	71	73
C SLEEVE LENGTH	65	66,5	67,5	69	70	71,5

