

# B&C X-LITE SOFTSHELL /WOMEN JW 938

OUTER WEAR /UNIT

## SOFTSHELL JACKET



Media player compatible:  
small opening for earphone  
cord in right chest pocket  
+ hidden earphone loop  
on the collar



Chin protector



Right chest zipped pocket  
with reverse zip fastening,  
garage & zip pull

Full front reverse  
zip fastener  
with zip pull

Full inner placket  
in outer softshell fabric

Performance fit:  
ergonomic body shape  
articulated raglan sleeves



2 front zipped  
pockets

Adjustable cuffs  
with rubber tab  
and velcro

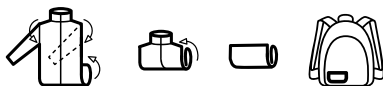


Adjustable bottom  
hem with elasticated  
drawcords and stoppers



Elasticated cuffs  
and bottom hem

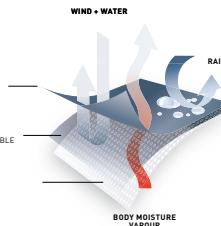
### B&C LIGHT PACK CONCEPT:



OUTER LAYER  
WOMEN WATER  
REPELLENT FABRIC  
(94% PES - 6% ELASTANE)

MEMBRANE LAYER  
BONDED WATERPROOF,  
WINDPROOF AND BREATHABLE  
MEMBRANE

INNER LAYER  
100% PES MESH LINING



### High performance 3-layer laminate softshell Light Pack jacket

Outer layer: 94% polyester - 6% elastane  
Woven Softshell (300 g/m<sup>2</sup> -  
total weight - all layers)

Mid layer: bonded breathable membrane,  
windproof, waterproof

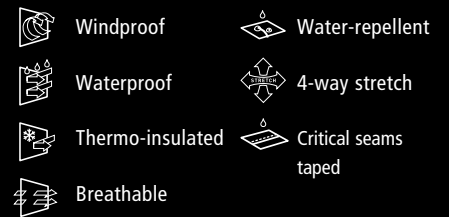
Inner layer: 100% polyester mesh

**Waterproof:** 5000 mm

**Breathable:** 5000 MVP

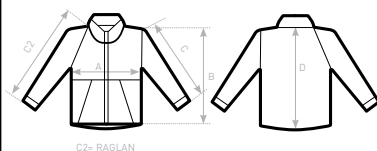
XS - S - M - L - XL - XXL

1 pc/pack & 10 pcs/carton



DUO CONCEPT

with B&C X-Lite  
Softshell /men



### SIZES [CM]

B&C X-LITE SOFTSHELL /W. JW 938	XS	S	M	L	XL	XXL	XXXL
A HALF CHEST	44,5	47,5	50,5	53,5	57,5	61,5	-
B BODY LENGTH FROM NECK POINT	63	64,5	66	67,5	69	70,5	-
C2 SLEEVE LENGTH	72,2	73,7	75,1	76,5	78,7	80,9	-
D CENTER BACK LENGTH	63	64,1	65,2	66,8	68,1	69,9	-

